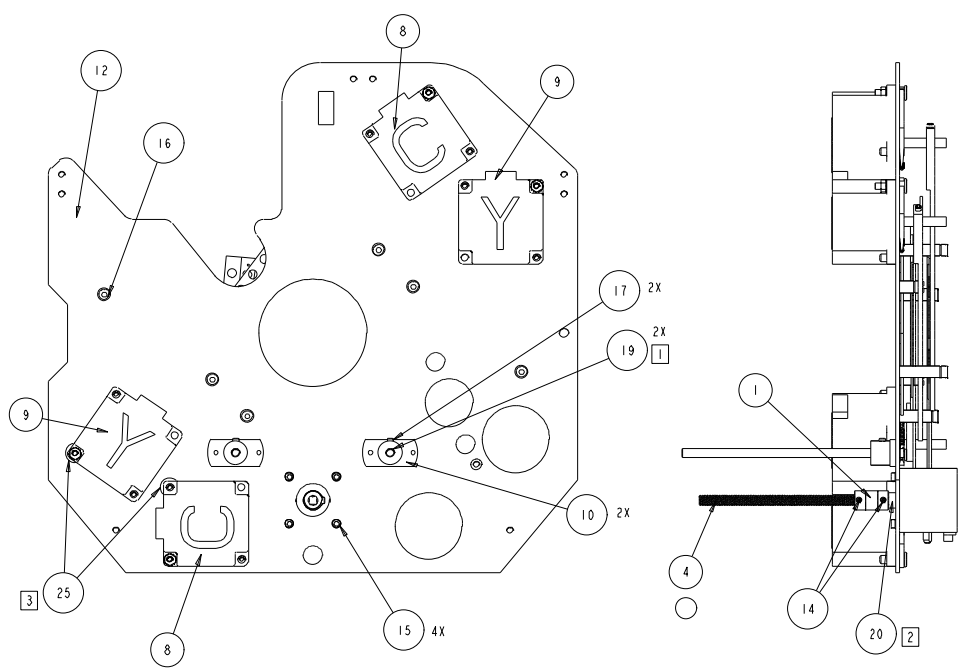


TWA076

REV.	DESCRIPTION	DATE	ENG	ECO #	APPR
1	CREATE DRAWING	8APR08	MB		
2	UPDATE ASSEMBLY WITH GROOVED STOPS, SPACER WASHER, ITEM #S	31MAY07	MB		
3	ADD DIFFUSION GLASS, MOTOR TILT WASHERS	2JUN07	MB		
4	ADD SPACER(90702216) TO MOTOR/COUPLING ASSY	7JUN07	MB		
5	SCREW 91040408 WAS 91040406; ADD LOCTITE THREADLOCKER TO M4 SET SCREWS; TW394 WAS TW388, 1 EACH, ADD KRYTOX	12JUN07	MB		
6	DIFFUSION GLASS TO 80530095; SETSCREW 91190406 WAS 91130406, 80071904 WAS QTY 3, 91040408 WAS QTY 7; ELIMINATE LOCTITE 242 & KRYTOX; REPOSITION WASHER ON MOTOR	3JUL07	MB		
-	PRODUCTION RELEASE	27AUG07	KLB		KDB

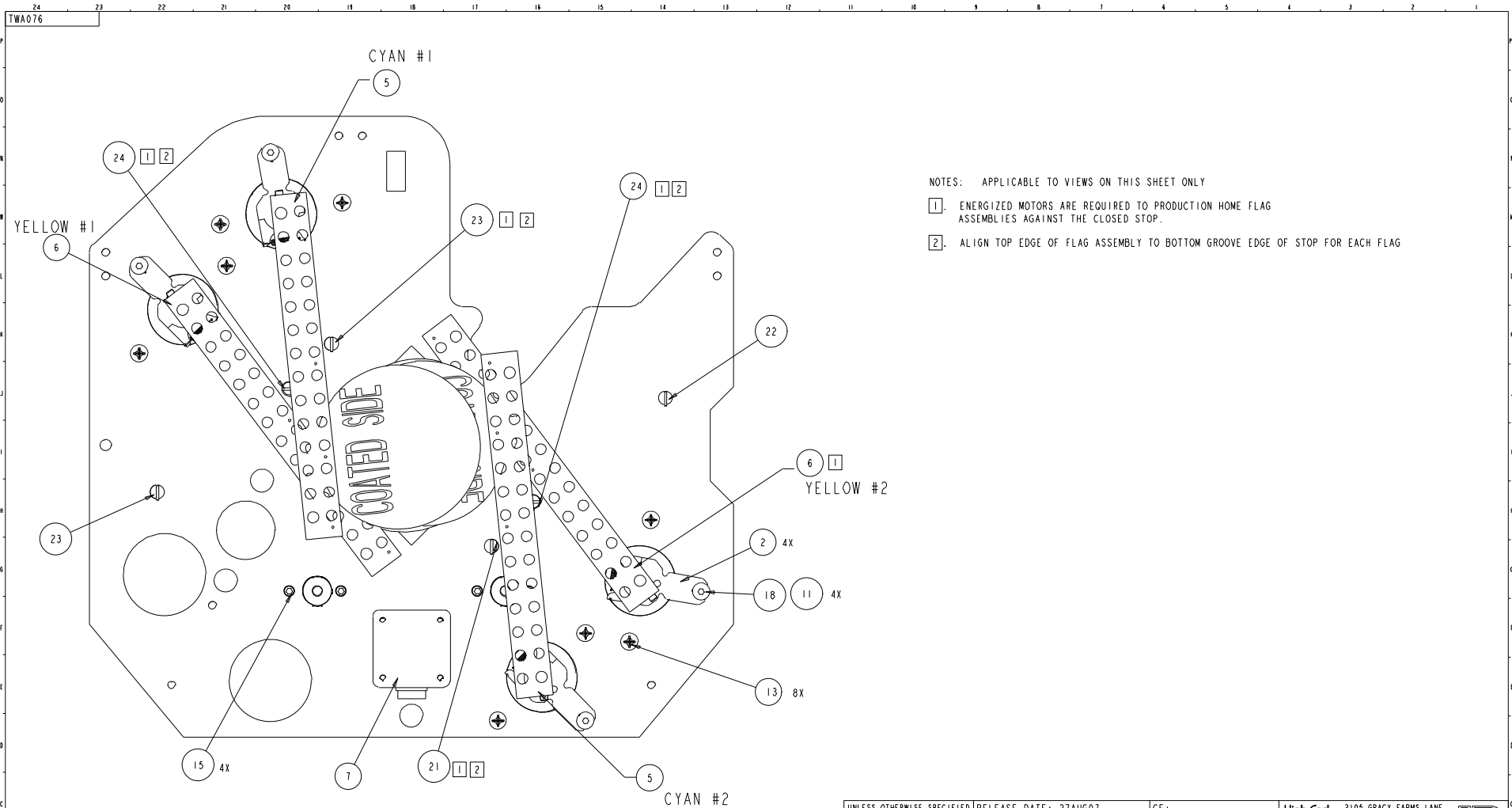


ITEM NO.	QTY.	FILENAME	PART NO.	REV	DESCRIPTION
25	2	WASHER_265_500_SS	90706020	-	WASHER, 1/4 FLAT .265 x .50 x .064 SS
24	2	TW372	80071904	C	STOP, M4, L=16.26 (1.64)
23	2	TW374	80071906	C	STOP, M4, L=31.75(1.25)
22	1	TW373	85000271	B	STOP, M4, L=25.4
21	1	TW394	85000269	-	STOP, CYAN #2 SG
20	1	SPACER_5-3_10_5MM_NY	90702216	-	SPACER, 5.3mm ID x 10.0 x 5.0 LG, NYLON
19	2	TW365	99260513	A	SHAFT, ACHROMAT ZOOM, A1
18	4	TW378	90702373	-	SCREW, SHOULDER, M4, MOTOR MOUNT
17	2	SCREW_M4_CONE_POINT_06_SS_PATCH	91190406	-	SCREW, M4 SOCKET SET, CUP, 06 SS PATCH
16	6	SCREWM4AF08BZ	91040408	-	SCREW, M4 SOCKET CSNK FLAT D8 BZ NYTEMP
15	8	SCREWM3AC06BZ	91000306	-	SCREW, M3 SOCKET CAP 06 BZ SEMS
14	2	SCREWB-32AS250FBZ	90707091	-	SCREW, 8-32 SOCKET SET 1/4 BZ FLAT PT
13	8	SCREW12_24_L5_FLTHD.PHIL	90711060	-	SCREW, 12-24 PHIL FLTHD, THRD ROLL, TRI LOBE
12	1	TW658	80070465	E	PLATE, MOUNT, YELLOW/CYAN
11	4	NUTM4KEP	91201204	-	NUT, M4 KEPS
10	2	TW317	80070448	-	MOUNT, SHAFT ZOOM, A1
9	2	_ME80_YELLOW1_SIZE23MOTOR	99270083	B	MOTOR, STEPPER NMB 23KM-K286-T21V
8	2	_ME80_CYAN_SIZE23MOTOR	99270083	B	MOTOR, STEPPER NMB 23KM-K286-T21V
7	1	MR108_01	99270075	-	MOTOR, STEP 2PH MET S17 11.5mm ALNICO NMB
6	2	TWA088	80560044	B	FLAG ASSY, YELLOW
5	2	TWA087	80560042	B	FLAG ASSY, CYAN
4	1	TW341	90721013	A	DRIVE SCREW, FRESNEL LENS, 7.11 [1.280] LG, SHANK
3	1	TWA808	80530095	-	DIFFUSION GLASS W/ADHESIVE PADS
2	4	TWA083	80140039	A	DAMPER ASSY, MTR BRAKE, HI-TEMP, .25 DIA
1	1	SP191	90701149	C	COUPLER, .88 SLIM-LINE, VIBRATION CONTROL

- NOTES: APPLICABLE TO VIEWS ON THIS SHEET ONLY
- 1. SHAFT TO BE FLUSH WITH BACK SIDE OF MOUNT, 2 PLACES
 - 2. SPACER TO BE INSTALLED BETWEEN COUPLER AND MOTOR HOUSING.
 - 3. INSERT WASHER BETWEEN MOTOR AND PLATE, 2 POSITIONS ONLY.

PROPRIETARY NOTICE:
 THIS DOCUMENT CONTAINS CONFIDENTIAL AND PROPRIETARY INFORMATION OF HIGH END SYSTEMS INC., (ALSO DBA LIGHTWAVE RESEARCH) AND IS GIVEN TO THE RECEIVER IN CONFIDENCE. THE RECEIVER ACCEPTS AND AGREES THAT, EXCEPT AS AUTHORIZED BY HIGH END SYSTEMS, THE RECEIVER WILL NOT PERMIT THE USE OF THE DOCUMENT OR ANY COPY THEREOF OR THE INFORMATION THEREIN, WILL NOT COPY OR PERMIT COPYING THE DOCUMENT WILL NOT DISCLOSE TO OTHERS EITHER THE DOCUMENT OR THE INFORMATION THEREIN, AND WILL UPON COMPLETION OF THE NEED TO RETAIN THE DOCUMENT, OR UPON DEMAND, RETURN THE DOCUMENT WITHOUT RETAINING ANY OF THE INFORMATION CONTAINED THEREIN IN ANY FORM WHATSOEVER.

UNLESS OTHERWISE SPECIFIED DIMENSIONAL TOLERANCES: 0 PLACE DECIMAL = ±0.38 1 PLACE DECIMAL = ±0.25 2 PLACE DECIMALS = ±0.13 ANGLES = ±0.5°	RELEASE DATE: 27AUG07 ENG: MIKE BELL ME: MFG: DESCRIPTION: MODULE, ASSY, COLOR, YELLOW/CYAN, SG SVC	CE: QA: DRW: MIKE BELL	High End 2105 GRACY FARMS LANE JUSTIN, TEXAS 78758 (512) 836-2242 FAX (512) 832-4128 http://www.highend.com	LR LIGHTWAVE RESEARCH
FOR PAINTED PARTS REFER TO ENG. SPEC. MANUAL W1-0592 ALL COMPONENTS, MATERIALS AND FINISHES TO BE ROHS COMPLIANT	MATERIAL: CHARTED	FINISH: N/A	PART NO. 80430101 DRAWING NO. TWA076 REV. -	
MIN. DRAFT MIN. RADIUS FLATNESS THICKNESS VOLUME	INTERPRET DIMENSIONS PER ASME Y14.5M-1994 THIRD ANGLE PROJECTION DIMENSIONS ARE IN MILLIMETERS	SI METRIC A1	DO NOT SCALE SCALE: 1.000 SHEET: 1 OF 3	

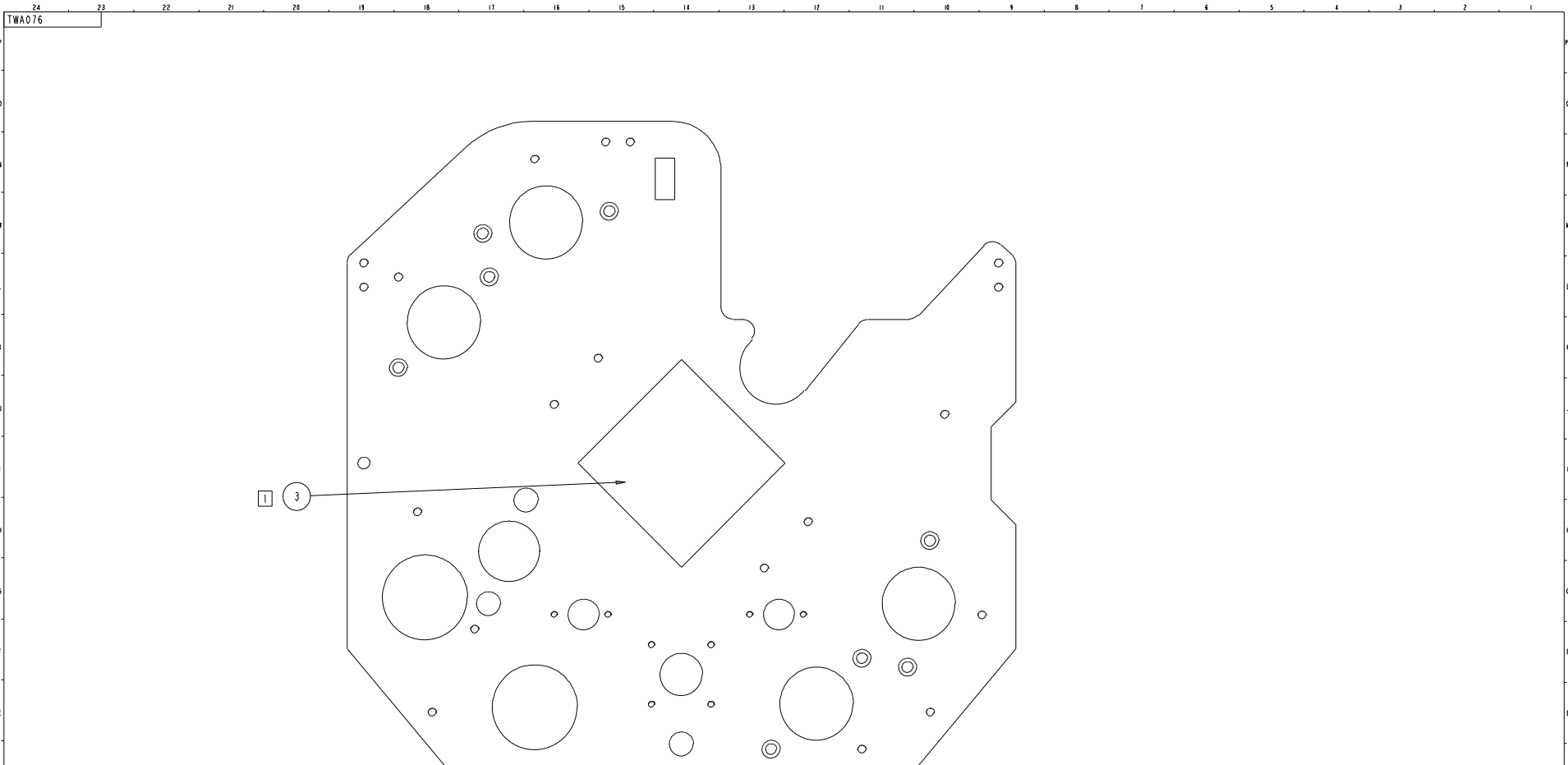


NOTES: APPLICABLE TO VIEWS ON THIS SHEET ONLY

- 1. ENERGIZED MOTORS ARE REQUIRED TO PRODUCTION HOME FLAG ASSEMBLIES AGAINST THE CLOSED STOP.
- 2. ALIGN TOP EDGE OF FLAG ASSEMBLY TO BOTTOM GROOVE EDGE OF STOP FOR EACH FLAG

UNLESS OTHERWISE SPECIFIED DIMENSIONAL TOLERANCES: 0 PLACE DECIMAL = ±0.38 1 PLACE DECIMAL = ±0.25 2 PLACE DECIMALS = ±0.13 ANGLES = ±0.5°	RELEASE DATE: 27AUG07	CE:	2105 GRACY FARMS LANE AUSTIN, TEXAS 78758 (512) 836-2242 FAX (512) 832-4128 http://www.highend.com	
	ENG: MIKE BELL	QA:		
	ME:	DRW: MIKE BELL		
	MFG:			
FOR PAINTED PARTS REFER TO ENG. SPEC. MANUAL W1-0592	DESCRIPTION: MODULE, ASSY, COLOR, YELLOW/CYAN, SG SVC			
ALL COMPONENTS, MATERIALS AND FINISHES TO BE ROHS COMPLIANT	MATERIAL: CHARTED	FINISH: N/A		
MFG. DRAFT	INTERPRET DIMENSIONS PER ASME Y14.5M-1994 THIRD ANGLE PROJECTION	SI METRIC A1	PART NO. 80430101	DRAWING NO. TWA076
MIN. RADII	DIMENSIONS ARE IN MILLIMETERS		DD NOT SCALE	SCALE: 0.333
FLATNESS				SHEET: 2 OF 3
THICKNESS				
VOLUME				

PROPRIETARY NOTICE
 THIS DOCUMENT CONTAINS CONFIDENTIAL AND PROPRIETARY INFORMATION OF HIGH END SYSTEMS INC., (ALSO DBA LIGHTWAVE RESEARCH) AND IS GIVEN TO THE RECEIVER IN CONFIDENCE. THE RECEIVER ACCEPTS AND AGREES THAT, EXCEPT AS AUTHORIZED BY HIGH END SYSTEMS, THE RECEIVER WILL NOT PERMIT THE USE OF THE DOCUMENT OR ANY COPY THEREOF OR THE INFORMATION THEREIN, WILL NOT COPY OR PERMIT COPYING THE DOCUMENT WILL NOT DISCLOSE TO OTHERS EITHER THE DOCUMENT OR THE INFORMATION THEREIN, AND WILL UPON COMPLETION OF THE NEED TO RETAIN THE DOCUMENT, OR UPON DEMAND, RETURN THE DOCUMENT WITHOUT RETAINING ANY OF THE INFORMATION CONTAINED THEREIN IN ANY FORM WHATSOEVER.



NOTES: APPLICABLE TO VIEWS THIS PAGE ONLY

- 1. REMOVE PROTECTIVE LINER FROM THE 4 ADHESIVE PADS TO BOND THE DIFFUSION GLASS TO MOUNT PLATE. CENTER OVER APERTURE.

UNLESS OTHERWISE SPECIFIED	RELEASE DATE: 27AUG07	CE:	High End	2105 GRACY FARMS LANE AUSTIN, TEXAS 78758											
DIMENSIONAL TOLERANCES: 0 PLACE DECIMAL = ±0.38 1 PLACE DECIMAL = ±0.25 2 PLACE DECIMALS = ±0.13 ANGLES = ±0.5°	ENG: MIKE BELL	QA:		(512) 836-2242 FAX (512) 832-4128 http://www.highend.com											
FOR PAINTED PARTS REFER TO ENG. SPEC. MANUAL W1-0592	MATERIAL: CHARTED	FINISH: N/A	MODULE, ASSY, COLOR, YELLOW/CYAN, SG SVC												
ALL COMPONENTS, MATERIALS AND FINISHES TO BE ROHS COMPLIANT	INTERPRET DIMENSIONS PER ASME Y14.5M-1994 THIRD ANGLE PROJECTION	SI METRIC A1	PART NO. 80430101	DRAWING NO. TWA076	REV. -										
<table border="1"> <tr><td>MIN. DRAFT</td><td></td></tr> <tr><td>MIN. RADII</td><td></td></tr> <tr><td>FLATNESS</td><td></td></tr> <tr><td>THICKNESS</td><td></td></tr> <tr><td>VOLUME</td><td></td></tr> </table>	MIN. DRAFT		MIN. RADII		FLATNESS		THICKNESS		VOLUME		DIMENSIONS ARE IN MILLIMETERS		DD NOT SCALE	SCALE: 1,000	SHEET: 3 OF 3
MIN. DRAFT															
MIN. RADII															
FLATNESS															
THICKNESS															
VOLUME															

PROPRIETARY NOTICE
THIS DOCUMENT CONTAINS CONFIDENTIAL AND PROPRIETARY INFORMATION OF HIGH END SYSTEMS INC., (ALSO DBA LIGHTWAVE RESEARCH) AND IS GIVEN TO THE RECEIVER IN CONFIDENCE. THE RECEIVER ACCEPTS AND AGREES THAT, EXCEPT AS AUTHORIZED BY HIGH END SYSTEMS, THE RECEIVER WILL NOT PERMIT THE USE OF THE DOCUMENT OR ANY COPY THEREOF OR THE INFORMATION THEREIN, WILL NOT COPY OR PERMIT COPYING THE DOCUMENT WILL NOT DISCLOSE TO OTHERS EITHER THE DOCUMENT OR THE INFORMATION THEREIN, AND WILL UPON COMPLETION OF THE NEED TO RETAIN THE DOCUMENT, OR UPON DEMAND, RETURN THE DOCUMENT WITHOUT RETAINING ANY OF THE INFORMATION CONTAINED THEREIN IN ANY FORM WHATSOEVER.